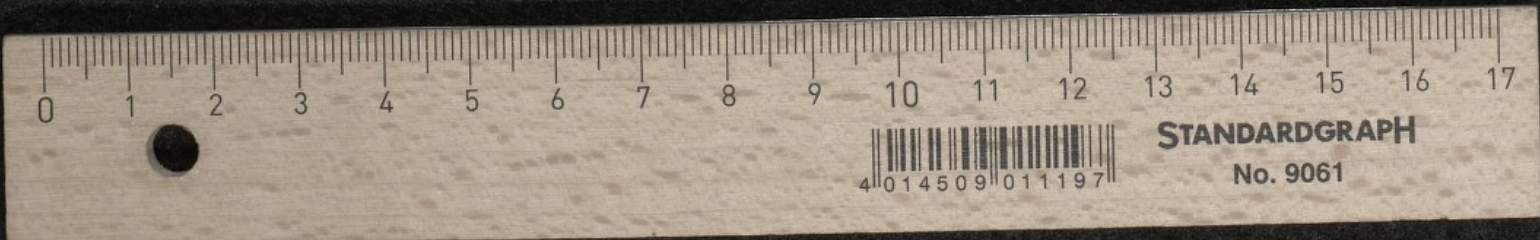


pcaptivat^o e^o uniuersitate u
di sub diablo captivat^o. Ad i^ullac
reutit^o. h^{ic} est q^{uod} plebs xpiana ad cel
liba reutit^o. Ad id^{em} mistiu^m sigeadu^m
ela celest^{is}. iⁿ ab alta q^{uod} est canticu^m e
nou^{us} tps^{us} captiuitatis respicitat.
iⁿ q^{uod} cas^{us} u^{el} miseria hois^{um} otinet^{ur}. d^{omi}pp
cha leg^{is} exodu^m. iⁿ q^{uod} exiit^{us} s^{er}egyria
d^{omi}sb^{er} q^{uod} eandem captiuitate^m d^{omi}sig
hieremta q^{uod} euadit^{ur} x^{risti} passioe^m ap
gebat futu^m reditu^m iⁿ ipsa resurre
cantat^{ur}. p^{ro} spe^m redit^{us} q^{uod} nob^{is} iⁿ ipso
data est. In sabbo cu^m tandem. l^{it}ter
iⁿ q^{uod} m^osta^m p^{ro}fecta capiti^m cu
rone^m sigeades. Oat^{er} p^{ro}li^m redit^{us}
iⁿ hac captiuitate positu^m p^{ro} spe^m
data est. osolari. Mod^o. p^{ro}mo affir
iⁿ p^{ro}cat^{ur} se cu^m reduntib^{us}; reduct
bitudine^m siml^{iter} orat^{ur} p^{ro} oib^{us}. Ho
ututes^{um} d^{omi}sb^{er}. q^{uod} p^{ro} h^{ic} reditu^m p^{ro}
u^{el} successores^{um} eoz^{um} ad ouocanda^m
simb^{us}; t^{er}q^{ue}. Titul^{us} sic leg^{is}. Is
p^{ro}li^m reduntis. p^{ro} dico exultis^{is} cat
u^{el} agget^{ur} d^{omi} reditu^m ad celestre^m pat^{er}

pp^{ro} d^{omi}sb^{er}
Coursel 152g.



License: [cc-by-nc-sa](#) – Scherpenheuvel-Zichem, Abdij der Norbertijnen van Averbode, Archief, Sectie IV, hs. 431, 37, fol. [1]v – Commentary on the Psalms
(<https://fragmentarium.ms/view/page/F-n57j/8127/64021>)