

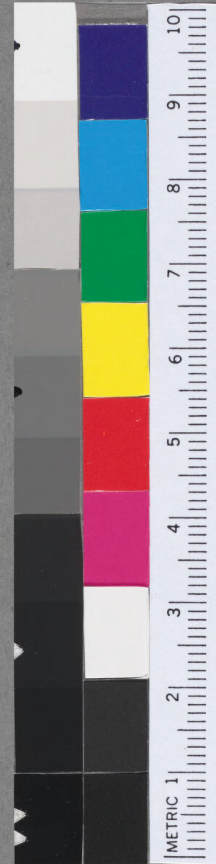
cluya alle luya. **ps.**

from the Cathedral of Como - 1

omino quoniam bo

no. 4 -

1916.15
a in seculum misericord



License: [public_domain](#) – Cambridge, MA, Harvard University, Houghton Library, MS Typ 985, (seq. 2) – Gradual or antiphonary
(<https://fragmentarium.ms/view/page/F-g6ep/1246/16870>)