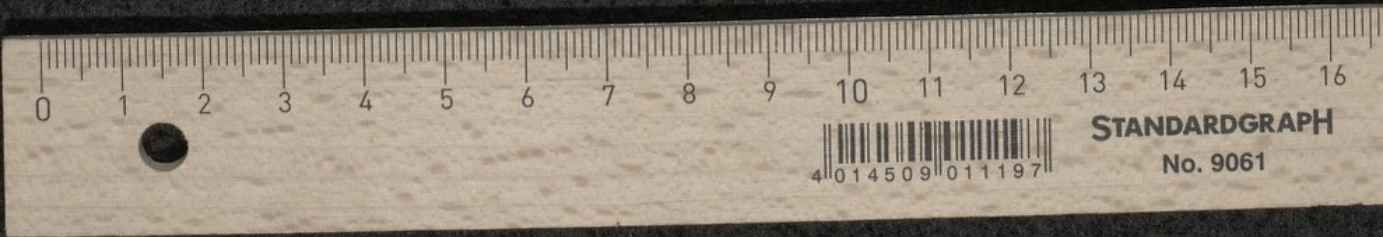


... ad eius quibus placet domi ...  
... et ceteris ...  
...  
... de inopem vas ferre et sic rason  
... reddere usque duo  
...  
... no pmi pmi nobile vni  
... qm adit lucem pmi pmi  
... abscondit finietu maledicet in populo  
... mectio super caput venditum  
... ipone querit qui vult recedere ab amico  
... mille vachte hem dies  
... puer en verhe  
... ice groec angual  
... so veler al  
...  
... est alabale de vrede  
... put impossibile a demora in malo  
... habent mo e hede  
... traditum fuisse  
... de mite alle do



License: public\_domain – Leuven, Archief van de Abdij van Park, VIII B20/120, Fol. [1]r – Pastedown with Latin and Middle Dutch probationes pennaë (<https://fragmentarium.ms/view/page/F-do1a/6751/56627>)