

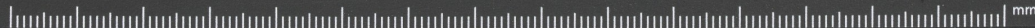
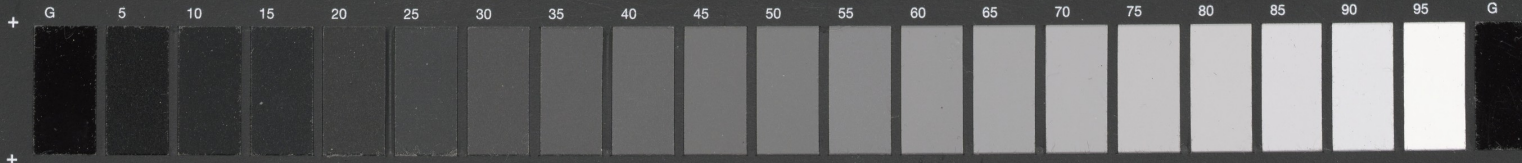
g' acor heuen bescreue al
w ar me daer toe pleghe sal
w itru leze warch mine
E n mine doen Tomie sinne
o indius leret di al so
h oe du va minne wdes vro
E rke wel wet mach degen
b eweer ofen mach beweer
h i dunct in ser die conne hier
D enghedal in mar r i vler
b ies y ma oie in mach mach
C ar erre vholene late
b est oie in me ene ma
E ie her in volare ene
S ok die so in dmeu in
D aet wone wylstew in
D u daer sond leu tyn leue
h er qualite met hem bewene
h out sone na mine lere
D oelhuw di comen af groot ere

2' ley hie ende f
o t seir sone dar
w is ende vroet
E c sal v leere dar
D in seide ende be
S i deus est an
v merke sone
en wat es dar
D ats darta di da
D achi gode salt e
D u sal des mor
E n am dme bede
o en seir die te la
D ar hem die ka
w achi dme te
D ar vele enou
o t seir menigh
E n voeghet in
ene doch ale
Die hant ghy

230417



Linear Gray Scale



Designed in cooperation with imagingetc.com

License: [public_domain](#) – Mechelen, Stadsarchief Mechelen, Verzameling van literaire fragmenten, Album I, voorlopig nr. 3/3, fol. [2]v-[1]r – <i>De boec van Catone</i>
(<https://fragmentarium.ms/view/page/F-dgc8/9657/70650>)