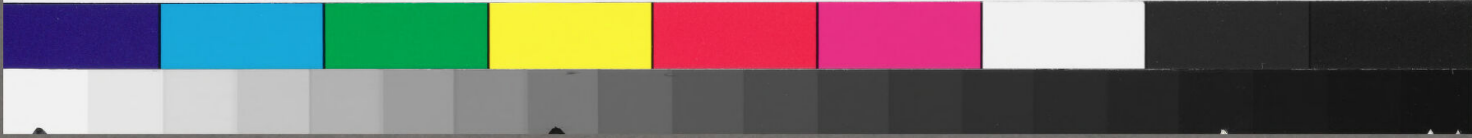


siue candida uicini subrisit molle puella. Cor t'rite
salut. hec die e' uita q' p'dit illi qui i'firmities s'
mulant. rite. q' i'q' no' ut m'ni m' sed recte q' s'ani
positu' e' argente catino duz holus et ppli cribro
decuta farina. **C**empremus fauces tenero latet ul
tus inoze putre quod haud deceat plebeia radere
beta. ad illa die qui se deliciae d' d' ueniat. fings qd'
no' possit os tui delicatu' cibos durissimos crissis gut
ture et pane ne delitiosus cribro discussis sed plebeia
de ppli amona. i. f. scale si frustra ha' fings aliena
st' ai' tui uita. ul' cetera que no' possit leuib' aut popu'
larib' cibis tui fastidiu' uicem possunt purgari. hec e'
qd' aut plebeia a rade' beta. rade' aut dixit exurgere ut
horat' hec potius q' gallina terge' palato i' timidu' et
iracudu' die frigidu' ex febre frigida h'ntib'. **A**rgente
catino. no' frigidu' pulmetaru' habere sed misero
egreffoso q'let qui st' algent' positu' e' i' catino holus
et posita e' farina. no'. i. i' catino farina' m'it pane'
die. et hoc fings gregale et plebeu' ee' positu' hec
ualet fingsamus opponi t' qui co'suesti elegantius
uine' temprenius fauces. i' uitantis uba' tenero
allegozuz uitu' labi usi ue'stendi. quat haud
deceat. i. no' oporteat qd' i' patiens sit rade'. hic ex aspe
rare die uulgis **A**lgey tu' excussit mebus timor
albus aristas. Hunc face' supposita feruescit sang

*puroam remediis
e' a'ne' scissus non
leuib'us*



License: [public_domain](#) – Cambridge, MA, Harvard University, Houghton Library, MS Lat 137, f. 62r – Noted liturgical fragments
(<https://fragmentarium.ms/view/page/F-avmm/9235/68471>)