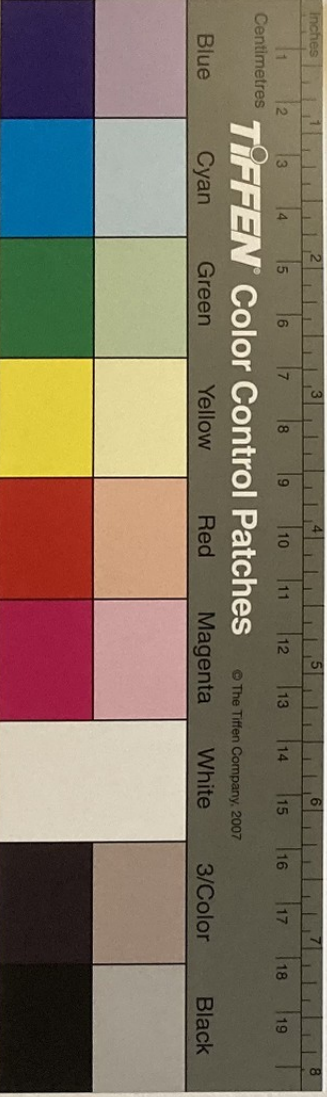


Fragment of a Latin manuscript page, showing several lines of text in a Gothic script. The parchment is heavily stained and damaged, particularly at the top and bottom edges. The text is arranged in two columns, with some lines appearing to be part of a larger block of text. The script is dense and characteristic of medieval manuscripts.



License: [public_domain](#) – Utopia, armarium codicum bibliophilorum, Don.MF.2023.27.05, Pseudo_Donatus_lanua_Leaf_1_recto_ – Pseudo-Donatus, lanua (<https://fragmentarium.ms/view/page/F-a2m7/9957/72475>)