

.lxxx.

in galyle i qd dicitur in m

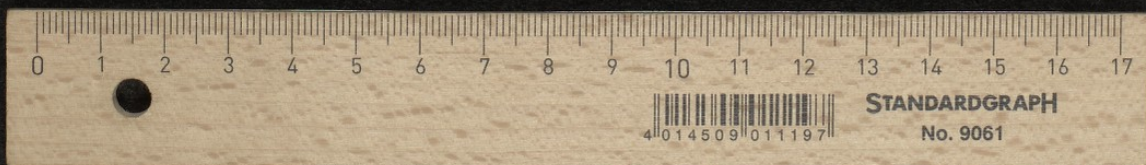
aspicientes in celum alle luia

que admodum uidistis eum ascendentem in ce lu ita

ueniet allelu ia alle luia alle luia *xlus.*

Quoniam primum uenit in celum eum in illis diebus uenit

The image shows a fragment of a medieval manuscript, likely a liturgical book, featuring musical notation and Latin text. The fragment is decorated with a large, ornate initial 'Q' in the center, which is filled with a colorful floral and geometric pattern. The text is written in a Gothic script on red staves, with some words in red ink (rubrics). The fragment is damaged, with missing sections and a ruler placed below for scale. The ruler is marked in centimeters and millimeters, and includes a barcode and the text 'STANDARDGRAPH No. 9061'.



License: [public_domain](#) – Gent, Rijksarchief te Gent, Archief van de kerk Sint-Jacobs te Gent, Overdracht 2023, nr. 58.7, fol. 80r – Gradual
(<https://fragmentarium.ms/view/page/F-6rpx/9997/72659>)