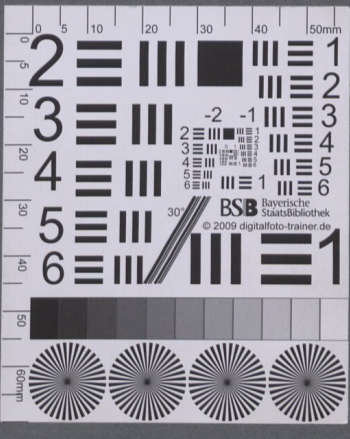
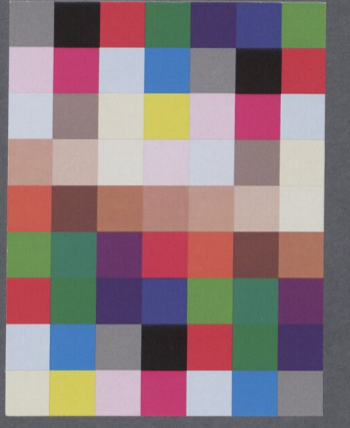


Quaestiones fecūdi libri celi et mūdi.
 An celi moueat sine fatigatōe. folio .76.
 An ppter gūratōes et cōruptōes sit necessa?
 ponēda pluralitas spū et motū eanū. 76.
 An motus celi sit regularis. .78.
 An oēs spe celestes
 q̄ fixe sint eiusdē s̄
 An tota terra sit
 q̄scens in medio.
 Quaestiones qu
 An aliquod elem
 aut simpliciter leue
 An q̄libz elemētū p̄
 et q̄libz elemētū p̄ter
 Quaestiones sup
 ruptione.
 An corp⁹ mobile su
 sit adequatū libi d
 one subiectum.
 An i cōruptōe sbāl
 teriā p̄mā ex pre fo
 An eadē q̄litas num
 lis q̄ p̄fuit igēto r̄n
 An q̄ntitas inherēs
 p̄ aliqui aliā mutat
 entitate māe separi
 An idisibile sit acti⁹
 An q² elta reman
 Quaestōes fecūdi
 An qualitates elem
 p̄pe ipsozum.
 An caliditas igni
 rant specie.
 An qualitates p̄me
 generati ex element
 An oē gūrabile nece
 Quaestiones sup
 An imp̄sio metheor
 turalitatis mixti imp
 metheorice subiectū
 An sit necesse hui
 cōtinuū lationibus s̄
 eius inde guber nef.
 An unūq̄qz iferi⁹ el
 suspicie cōcana sup
 An me^a regio aeris
 An cometa sit de na
 An pluuia gūret i m
 An fontes et flauij ge
 quis rēceptis sub ul
 Quaestōes fecūdi
 An loc⁹ i q² ē mare
 An mare sit salum s̄
 itris cum humido.
 .110. An uetus sit exalatio calida et sicca laterali
 mota circa terram. .111.
 An terremot⁹ sit nāliter possibilis. .113.
 Quaestiones tertij libri metheor⁹.
 An typho et euenbia fiat ex exalatiōe expul
 .115.
 .117.
 .118.
 tū scie
 .120.
 .121.
 esse
 .123.
 .124.
 et itel
 .126.
 essen²
 .128.
 us per
 .130.
 passi
 .132.
 .134.
 .135.
 scūs
 .137.
 ellectu
 .139.
 te ab i
 ncto et
 n itel
 .141.
 nostri
 .144.
 scfato
 bri de
 .146
 cete
 .150.
 mituz
 .152.
 isce²
 nora
 .154.
 igilia
 .156.
 .159.
 ceui²



BIBLIOTHECA
 REGIA
 MONACENSIS