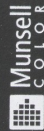


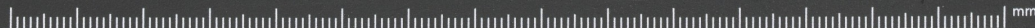
3/7

1. Sprinc weder inden po
 2. Ar machue and menne
 3. De hem selue mocht verba
 4. n eere en in heersalpen
 5. Meer lodderne doet he dnen
 6. Dar si leue hare tin
 7. Reche na sence vuctaers
 8. Dar sin broders mer vele
 9. A se si die lade al om helte
 10. So en betere boden hare
 11. Aechter mer in eere
 12. De cope si selde
 13. Nu mogeds hou mer
 14. Dar was hantou her
 15. Dar was vō hantou
 16. Dar was hantou hantou
 17. Dar was her ce
 18. G h en
 19. J
 20. D
 21. J
 22. D
 23. J
 24. D
 25. J
 26. D
 27. J
 28. D
 29. J
 30. D
 31. J
 32. D
 33. J
 34. D
 35. J
 36. D
 37. J
 38. D
 39. J
 40. D
 41. J
 42. D
 43. J
 44. D
 45. J
 46. D
 47. J
 48. D
 49. J
 50. D
 51. J
 52. D
 53. J
 54. D
 55. J
 56. D
 57. J
 58. D
 59. J
 60. D
 61. J
 62. D
 63. J
 64. D
 65. J
 66. D
 67. J
 68. D
 69. J
 70. D
 71. J
 72. D
 73. J
 74. D
 75. J
 76. D
 77. J
 78. D
 79. J
 80. D
 81. J
 82. D
 83. J
 84. D
 85. J
 86. D
 87. J
 88. D
 89. J
 90. D
 91. J
 92. D
 93. J
 94. D
 95. J
 96. D
 97. J
 98. D
 99. J
 100. D

230417



Linear Gray Scale



Designed in cooperation with imagingetc.com

License: [public_domain](#) – Mechelen, Stadsarchief Mechelen, Verzameling van literaire fragmenten, Album I, voorlopig nr. 3/7, facie – Rol van Mechelen
(<https://fragmentarium.ms/view/page/F-4oar/9649/70633>)